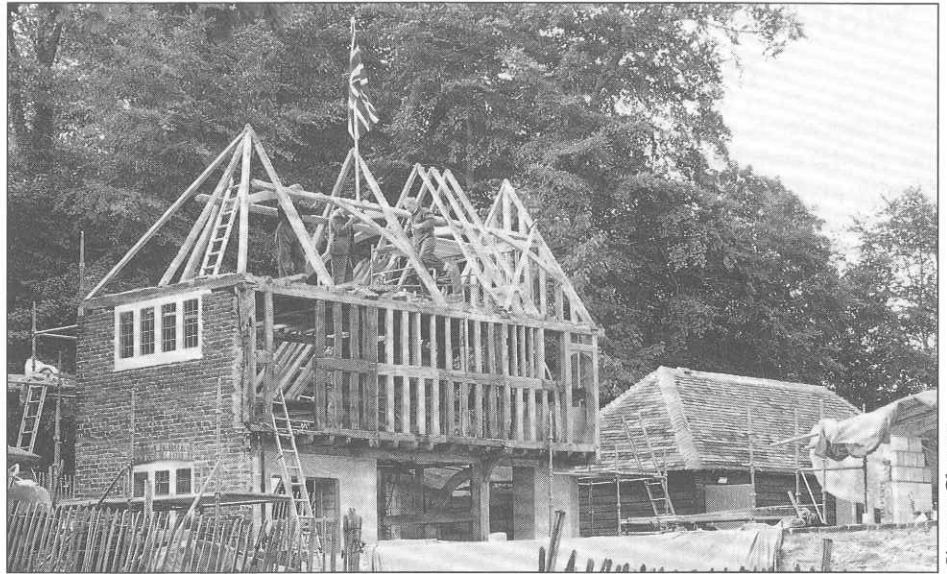


WEALD &
DOWNLAND

OPEN AIR
MUSEUM

MAGAZINE

Vol. 5 No. 13 October 1994



LONGPORT HOUSE TAKES SHAPE AS THE MUSEUM'S NEW ENTRANCE FACILITY

Longport House is gradually taking on its original appearance as work proceeds on this important new project for the Museum. The foundations, stonework, brickwork and the 16th century timber-framed cross-wing were all in place by the beginning of October. The next stages include the roofing of the 19th century addition and the reconstruction of the main roof structure and first floor gallery.

Longport House will form a brand new entrance facility for the Museum, upgrading the admission arrangements for visitors and providing a new museum shop of high quality and new offices. The building will be operational in June next year.

Dismantled from the site of the Channel Tunnel terminal, the house is being re-erected with archaeological precision. The use of a combination of measured drawings, rectified photographs and wooden battens to mark the brick courses, has enabled the brickwork to be re-erected with a level of accuracy rarely, if ever, achieved in

building reconstructions. Each brick has been replaced in exactly its correct position in relation to its neighbours.

Methods specially developed by the Museum to ensure an accurate reconstruction have formed a successful communication link between those responsible for the dismantling and analysis of the structure and the craftsmen re-erecting the building.

The house, which is complex, with sections dating from the 16th, 17th, 18th, 19th and 20th centuries, has yielded a number of secrets during dismantling and rebuilding, including the use of medieval grave markers in its walls. Some of these finds will be displayed within the building.

Eurotunnel funded the dismantling and the re-erection of the 16th century cross-wing. This latter task, completed in September, fulfills the obligation on the company for its rebuilding within 18 months following the local authority's permission for the removal of the house.

The Longport project, costing £250,000 has also received funding from the

Business Sponsorship for the Arts scheme, Friends of the Museum and the Science Museum PRISM Fund.

Led by Richard Harris, the Museum's Research Director, the team responsible for the re-erection includes Roger Champion (carpentry), Mick and Ron Betsworth (stonework and foundations), Mick Banks and Charlie Osborne of E A Chiverton and Sons (brickwork) and Bob Powell (curatorial).



The 16th century timber-framed cross-wing of Longport House takes shape on its new site

Come Christmas Shopping at the Museum !

Do your Christmas shopping in the attractive surroundings of the Museum's historic buildings fortified with roast chestnuts and baked potatoes, mulled wine and mince pies !

The Museum is holding its first two-day Christmas shopping event and crafts weekend on 26-27 November when a wide variety of unusual and special gifts will be available - and there will be a reduced entrance fee for the occasion !

Local craftsmen will be offering high quality goods for sale, at prices to suit

all pockets. Among items on sale will be Christmas wreaths and table decorations, wooden and furry toys, stocking fillers, children's clothes and adult sweaters, pottery, turned wood, narrow boat painted objects, wines, fudge and other locally produced foods.

Special attractions to give the weekend a seasonal feel include carol singers, hand-bell ringers and a juggler.

Wildlife artist Gordon Beningfield will sign copies of his new biography at 2.00 p.m. on 27 November. Tasty snacks available will include barbecued

sausages, baked potatoes, roast chestnuts, mulled wine and mince pies. Hot soup and food will also be served at the Museum cafe.

The Museum will open from 10.30 a.m. to 4.00 p.m. and there will be a specially reduced entrance fee of £2 for adults and £1 for children. The weekend will be free of charge for Friends.

Friends can help publicise the event by distributing posters, available from the Museum office. Put the event in your diary and please spread the word - it promises to be a wonderful weekend !

VISITOR NUMBERS STABILISE AFTER DISAPPOINTING START

Strenuous efforts to achieve more and better special events and an increase in publicity played an important part in helping visitor numbers during the height of the summer season. But the overall picture is still disappointing, with a drop of 11.5 per cent by the beginning of September.

1993 brought an increase of 6,000 visitors over the previous year. But by the beginning of September this year visitor numbers were 111,500, compared with 126,000 at the same time last year.

Similar downward trends have been experienced by many museums and visitor attractions all over the country this year. Despite the reported signs of

economic recovery, the visitor attraction market is seriously affected in the aftermath of recession.

Increased open days during the winter months and milder winters have given us a sound start to the season in recent years. But weather is always an important element in visiting trends. Almost continuous rain throughout the winter and spring, particularly over the Easter weekend seriously affected our numbers, and by the end of May we were more than 15 per cent behind the same time last year.

New Museum chairman

Nigel Stephens has once again taken over the reins as Chairman of the Museum's Executive Board at an important time in the Museum's development. Mr Stephens, who lives at Boxgrove, is a former senior partner of Whiteheads Estate Agents in Chichester. He takes over from Dr Alan Hayes, who has retired.

The trend was reversed during the more settled weather in the main summer months and a major marketing and publicity drive during July and August promoting a daily programme of demonstrations and activities played an important part.

The effort to boost visitor numbers continues into the autumn. The re-erection of the cross-wing of Longport House was featured by BBC South Today and Meridian TV and also received national newspaper coverage.

"Rats and Bumfreezers", the exhibition about the Women's Land Army in October, has attracted special interest from WLA societies and Women's Institutes.

Two children's activity days were planned for 25-26 October during half-term week, and a two-day Christmas Shopping and Craft Weekend is planned for 26-27 November.

The Museum is open throughout the winter months on Wednesdays and weekends, and daily between 26 December - 4 January. It is anticipated we shall end the year with a total of some 140,000 visitors.

SUPPORTING THE WEALD AND DOWNLAND MUSEUM

We are most grateful to the following for their generous assistance to the Museum during 1994.

- Basil Shippam Trust
- The Blunt Trust
- The Brewers' Company
- Brixton Estate Charitable Trust
- Carringdale (Bognor) Ltd
- David Cover and Son Ltd
- The Drapers' Charitable Trust
- Edward Hogg Charitable Trust
- Esmee Fairbairn Trust
- Eurotunnel
- Fergus Anstruther Charitable Trust
- Flexiprint Ltd
- Godinton Charitable Trust
- Golden Bottle Trust
- Hall and Co.
- Havenhope Trust
- The Idlewild Trust
- The Ironmongers Company
- Marks & Spencer plc
- The Mercers' Charitable Trust
- Peter Minet Trust
- Robert Keown Charitable Trust
- Stride and Son (Chichester)
- Tarmac Topblock

There are many ways in which companies can provide financial support for the Museum. Opportunities exist for sponsorship in a variety of specific projects.

If you would like to discuss ways in which your company could become involved in the Museum's development please contact Chris Zeuner OBE, Museum Director, on 0243 811364.

Conservation Board opens office at Museum

The Sussex Downs Conservation Board has opened its western area office at the Museum. The western area manager and five staff are operating from a new base in the upper storey of the Horsham shop. The arrangement cements the strong links the Museum has with conservation in its region and at the same time provides a small regular additional income for our project.

New Museum Secretary

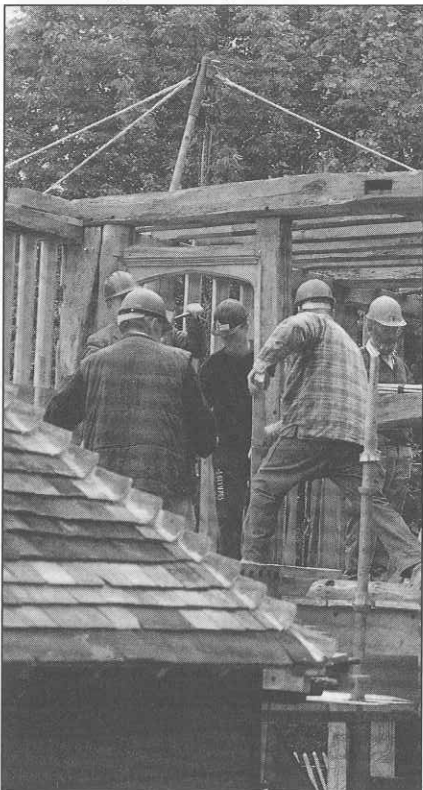
We welcome Karen Searle as the new part-time Museum secretary. Karen, who lives at East Dean, will be responsible for a wide variety of tasks, including schools and group bookings.

Le Walk brings amazing response!

Museum director Chris Zeuner's sponsored walk through the Channel Tunnel in February raised an extraordinary total of £14,000 - nearly three times our expectations!

The funds have been used to help pay for the re-erection of Longport House, dismantled from the Channel Tunnel terminal last year. The Museum is most grateful to the many organisations and individuals who contributed towards this magnificent total.

The doorway to the cross-wing of Longport House being fitted into position.



Jimmy Clewett



Sydney Harris

Southern Water Services' support of the Museum's updated exhibition on plumbing and leadwork brought a Business Sponsorship Incentive Scheme (BSIS) Award, matching Government money which further assisted the project. Pictured are Rosemary Lewis and William Cutting of Southern Water receiving their certificate from the then National Heritage Minister, the Rt. Hon. Peter Brooke. MP On the right is Chris Zeuner, Museum Director.

New to the collections . . .

- A fine late Victorian galvanised bushel measure from Mr Peter Carmichael, to compliment our weights and measures items.
- Pre-world war horse harness fittings, the stock of an old saddlers shop, from Mr Pat Combes of Chichester, which will augment our collections and be used for our horses.
- A collection of sheep bells used by the late Harry Long, shepherd at Nepcote, Findon, who died c. 1965.
- Axes, side adze and billhooks belonging to the late "Dick" Whittington, a forester on the Cowdray Estate until about 1948.
- A Sussex dung-cart, once used at Warnham Court Farm, accepted following de-accessioning by Horsham Museum: now on view in the Museum's waggon shed.
- A Ransomes horse-plough, now virtually restored by Andrew Hodby in readiness for Peter Albon to use with our horses.
- A Massey-Harris horse drawn dung spreader, awaiting restoration for use, for which we have just received the manual and parts list from Canada!
- Some Wealden ironwork lattice pattern windows, some fine 18th and 19th century fireplace cranes and some barking irons from the days when oak tree bark was stripped off to be used for tanning hides.
- The total number of items documented in 1994 to date is 258; most accessioned by Nigel Westacott who has been of great assistance to the Curator, Bob Powell.



Chris Zeuner

Dave Gabbitts and Albert Peacock harvesting the Museum's crop of wheat in August. The field yielded some 10,000 sheaves! Together with the crop grown on Lady Elizabeth Benson's Cucumber Farm at Singleton, the sheaves were built into six ricks ready for threshing for thatching straw in October.

Lick of fresh paint

Our team of practical volunteers has continued busily during the summer season. Among their tasks was the application of a fresh coat of limewash to Winkhurst, covering the timbers as well as the daub, reflecting the method thought to have been used on many timber-frame buildings when they were originally constructed.

Despite the Museum's explanation about this technique it is often misunderstood by visitors who regard the "black and white" appearance of timber-frames as being traditional. Showing how many buildings could have looked encourages visitors to consider some of their misconceptions.

The team also painted the Goodwood Granary in the car parks.

Lighting the way . . .

Brian Weekes and Heather Champion have been involved in a novel way of raising funds this year - their hands-on candle-making activity has raised more than £2,000.

Their stand has been present at all the major special events this year, proving extremely popular with children and adults alike. The money will be used to help care for the Museum's farm livestock.

Open air service on the Trundle

An open air service was held on the Trundle hill near the Museum on 16 August to celebrate St Roche's Day. Some 250 people attended the ecumenical event organised by the Museum and the Rector of Singleton, the Rev Paul Jenkins.

The service took place on the site of a small chapel dedicated to St Roche which stood on the hill within the ramparts of the Iron Age fort in the middle ages. St Roche was a medieval French saint who was invoked against the plague.

Another service is being planned for next year, the 700th anniversary of St Roche's birth.

FRIENDS ENJOY FIRST ANNUAL CONFERENCE

The first Friends' annual conference held this year proved highly successful, starting with an excellent dinner and musical accompaniment by singers from Boxgrove in the Vicars Hall, Chichester. Saturday morning brought a tour of the fascinating 18th century Stag Park Farm on the Leconfield Estate near Petworth and a visit to medieval farm buildings at Upwaltham, interpreted by the Museum's Research Director Richard Harris.

The art of the house painter in the 18th century was the subject of the afternoon

talk by James Ayres, Curator of the John Judkyn Museum, Bath before the annual general meeting. After tea, Friends were given a guided tour of the West Dean craft workshops.

The conference is a wonderful opportunity for members of the Friends to meet together and it is hoped that the 1995 event will be well supported. Plans for next year's conference still have to be finalised, but will include a buffet supper, excursion and lecture. Details will be announced in the Spring 1995 Magazine

Virginia Lyon

Outings and events

The Friends' three fund-raising events this summer were enjoyable and successful. Mrs Louise Warner kindly opened her beautiful garden at Frith Hill, the St Peter's Singers gave another concert of madrigals and early music in the market square and there was a barn dance and barbecue in Singleton Cricket Pavilion.

Frith Hill Garden will be open again for the Museum on 13 June next year and another barn dance will be organised around mid-summer.

Friends also enjoyed three outings - to Ightham Mote, Luton Museums and hat factory and Rochester and Chatham Historic Dockyard. More outings are planned for next year.



Francis Higgins of Chobham, Surrey, winner of the Supreme Inter-Breed Sheep Championship with his Rambridge Jacob ram receives his trophy from Daily Telegraph Countryside Correspondent Robin Page at the Rare Breeds Show in July.

Diana Zeuner

Slindon Dinner

Friday 2 December

Speaker: Paul Farnsworth

Paul Farnsworth, designer of many of the sets and costumes at Chichester Festival Theatre, will speak on designing for plays and musicals after the Friends' dinner in the Coronation Hall, Slindon at 7.30 p.m. on 2 December. Mr Farnsworth, who has designed for London and international productions, promises to be a lively and interesting speaker.

Tickets at £10 will be limited to 50, so please book early to avoid disappointment. Cheques should be made payable to Friends of the Weald and Downland Museum, plus s.a.e. to Jean Piggott, c/o the Museum office.

Spring Tour 1995

The 1995 Spring Tour will be in the Lake District on 6-10 April and will be based on the Derwentwater Hotel, Portinscale, overlooking the lake, a short walk from Keswick. Visits are likely to include Hawkshead, Wordsworth's home Rydal Mount, Muncaster Castle, Sizergh and Ruskin's House, Brantwood. Exact details will be known at the end of October from Virginia Lyon.

The cost will be approximately £195 to include return coach from Singleton, bed, breakfast and dinner, admission charges and two nights' entertainment at the hotel. There are only four single rooms, available for a £39 supplement. Applications should be made in writing to Jean Piggott, c/o the Museum office, enclosing an s.a.e. and a deposit of £20 made out to Friends of the Weald and Downland Museum. This will be returned, less an administration fee, if the place is filled in cases of cancellation.

Food Fair Competition

Once again it is the time of year to remind you to prepare your jam, pickles and chutney for the annual Food Fair on Monday 7 April 1995.

Details of classes and entry forms available from January 1995 from Jean Piggott c/o the Museum Office.

Friends 1994 tour to Plymouth

En route to Plymouth the Friends coach party made an unscheduled visit to the Dorset Biscuit Factory (supplier of fare to the Museum shop!) visited Honiton Lace and Pottery Museum and made its way across Dartmoor stopping briefly at Widecombe and at the Two Bridges Hotel for a delicious Devon cream tea.

At the hotel, which gave panoramic views over the Sound and into the town, Len Copley gave a most interesting illustrated talk on Dartmoor wildlife and landscape.

Morwellham Quay was the first stop on Friday - a riverside village in 150 acres of the Tamar Valley which became the greatest copper port at the time of Queen Victoria. During the last 25 years it has been in the care of the Morwellham Trust. Some Friends later visited the Merchants House in Plymouth where a complete chemist shop has been re-created.

On Saturday the party visited Cotehele, home of the Edgcumbe family, with gardens, containing a medieval dovecote, stretching steeply down to the shores of

the River Tamar where the quay houses the sailing barge "Shamrock". Friends also visited the mill, cider press and estate workshops, returning to Plymouth by boat on the Tamar.

Via Torquay on the way home on Sunday, the party had lunch at the Otterton Mill Centre and a guided tour of the mill and chance to visit the craft centre. Thanks are due to Frank Knights for organising the tour and to the coach driver who made everything run so smoothly.

Jean Piggott

SPECIAL EVENTS BRING IN THE VISITORS

During a season when visitor numbers have been disappointing, attendances at special events have been good. The quality of the events, exhibitions and demonstrations has been particularly high.

Our early season activities included a photographic exhibition recording the River Lavant floods, compiled by the Observer Newspaper series and supplemented with information supplied by the National Rivers Authority.

The Traditional Food Fair, sponsored by the Observer Newspaper Series and held over the extremely wet Easter weekend, attracted a record number of 35 exhibitors and the visitor levels were surprising given the weather. Throughout May the exhibition *Building in Timber - the American Tradition 1680 - 1980* was held in Crawley Hall.

A new event run in association with the Sussex Downs Conservation Board was held over the May Day Bank Holiday concentrating on a countryside and conservation theme, and the Wool and Wood event mounted with assistance from Michelle and Bob Green at the end of the month, was extended to cover the whole of the Whitsun Bank Holiday weekend.

The Heavy Horse Day in June enjoyed its best attendance for three years with more than 3,000 visitors. The skills test sponsored by the Nationwide Building Society was won by Mrs Viv Layfield.

The biennial Building Conservation Fair took place at the end of June. This year saw the launch of a new series of master classes in brickwork, joinery, leadwork, lime, stonework, timber framing and thatching, organised in association with the Joint Centre for Heritage Conservation and Management. The Black Horse Agencies sponsored the class run by Gerard Lynch on gauged

brickwork.

In its tenth year the Show for Rare and Traditional Breeds in July, our largest event, was as popular as ever, with another record number of livestock entries. Visitor numbers were slightly down, due partly to the exceptionally hot weather. Show secretary Virginia Lyon worked tirelessly throughout the year organising this event and also assisted with administration of some of the other events during the year.

Sponsors for the show, to whom we are most grateful, included the West Sussex Gazette, National Westminster Bank, Cyanamid of Great Britain Ltd, Stride and Son (Chichester), and the Worshipful Company of Woolmen. Robin Page, countryside correspondent of the Daily Telegraph presented the trophies.

In addition to the increased programme of activities in August, the History Reenactment Workshop's reconstruction of domestic life at Pendean Farmhouse was extended to a very successful five days. A record number of families attended the Children's Activity Weekend, and a traditional charcoal burn led by Alan Waters and woodland craft demonstrations including a hurdle-making course run by Ken Galton ended the month.

The Novice Sheepdog Trials, supported by Deosan, Goodrowes of Chichester and Karova Farms, under the direction of shepherd Roger Linley, took place in September, attracting only slightly fewer visitors than last year.

Six ricks of wheat awaited the threshing box on 22/23 October for our annual Steam Threshing and Ploughing with vintage tractors and heavy horses. The event was again sponsored by Chichester Tractors and a ploughing competition for the vintage tractor drivers was sponsored by the Farm Advertiser.

Fun in the Sun!

The Museum was a hive of industry in August for the third - and by all accounts, the best so far - Childrens Activity Weekend. More than 3,000 people enjoyed the two days of hands-on activities staffed by a small army of willing demonstrators, craftsmen and volunteers.

More than 30 different activities beckoned - ranging from traditional games to blacksmithing. Some visitors had attended the event in previous years, and many came for both days.

Many images endure - such as the teeming potential hurdlers in the shade of the smithy's chestnut tree, the fiery glow of the cooking at Pendeon and enthusiastic fathers at the whistling kettle races at the charcoal camp.



Chris Zeuner

Two youngsters get down to the serious business of brick-laying during the Children's Activity Weekend in August.

Sir James Waddell retires

Sir James Waddell has retired as the Museum's president after nearly two decades of involvement with the Museum. The new president is Lord Nathan, chairman of the Sussex Downs Conservation Board.

Sir James first became interested in the Museum nearly 20 years ago and has watched it grow from small beginnings to one of the UK's major open air museums with a reputation for excellence. He was appointed a trustee in 1980 and served as chairman of the Friends for nine years.

He devoted a considerable amount of time and effort to the Museum, visiting regularly and supporting staff and volunteers in their task. His wise counsel and invaluable contribution will be greatly missed. However we are pleased that he intends to continue his support for the Museum, and to pay frequent visits to the site.

Lord Nathan has already made a number of visits to the Museum and has shown a particular enthusiasm for meeting volunteers and staff "on the job".



Diana Zeuner

Father and son tackle the construction of a miniature hurdle outside the smithy

National policy for museums anticipated

The new Department of National Heritage is currently carrying out a study to decide on a national policy for museums. The Association of Independent Museums, of which our museum is a member, has submitted its ideas for change in the museum sector which will be considered along with

responses by museums and organisations from throughout the UK.

It is hoped that the review is a chance for the value of museums to be more properly recognised by Government and that the opportunity is taken to improve the legal and administrative framework within which museums operate.

RATS AND BUMFREEZERS !

The magnificent effort of some 40,000 Womens Land Army girls is celebrated in a new temporary exhibition with this intriguing title held to coincide with the Steam Threshing and Horse Ploughing event in October.

Curator Bob Powell, assisted by Nigel Westacott and the memories of an "army" of ex-WLA girls, prepared the exhibition in the Crawley Hall building from 10 - 31 October.

Overwhelmed by the response to his pleas for assistance with the display, Bob had some 700 photographs to choose from. These not only showed the Land Girls doing various farm duties from bull handling to ploughing, but also reflected British farming and the countryside at the time.

There were plenty of wonderful stories, from the WLA girl from Reading who became an excavator driver, to the work of the Timber Corps.

All these ladies were represented through photographs, memorabilia and uniforms which they lent for the exhibition. One of them, Mrs Una Wilson, who taught tractor driving, was re-united with a Fordson tractor at the Steam Threshing event. The Museum hopes it will be possible to repeat the exhibition next year.

"Rats" refers to some 250 of the girls who were ratcatchers, and "bumfreezers" is the girls' own word for their three-quarter length greatcoats .



Jimmy Clevert

Visitors enjoying the experience of seeing how domestic life would have been lived in 16th century Pendeen Farmhouse. The History Re-enactment Workshop spent five days at the Museum this year.

EVENTS DIARY

10 - 31 October "Rats and Bumfreezers" - an exhibition about the Women's Land Army

22 - 23 October Steam Threshing and Ploughing with Heavy Horses and Vintage Tractors

25 - 26 October Two days of children's activities for the half term week

16 November Goodwood Country Park walk led by Ranger Gary Couper. Meet at Seven Points Car Park 10.30 a.m.

26 - 27 November Christmas Shopping and Crafts Weekend at the Museum. 11.00 a.m. - 5.00 a.m.

4 December Goodwood Country Park Tree Dressing Day. Meet Counters Gate Car Park at 11.00 a.m.

19 December Carols at North Cray House at 7.00 p.m.

26 December and 1 January Trundle Landscape Walk led by Goodwood Country Park Ranger Gary Couper. Meet at Seven Points car park at 2.00 p.m.

26 December - 4 January Christmas and New Year Opening at the Museum - daily 11.00 a.m. - 4.00 p.m.

12 January Goodwood Country Park Walk led by Ranger Gary Couper. Meet at the Charlton Triangle Car Park at 10.30 a.m.

29 January Charlton Village Walk led by Richard Pailthorpe. Meet at Charlton Barns opposite The Fox Goes Free Inn at 10.00 a.m.

20 - 26 February Half Term Opening. 11.00 a.m. - 5.00 p.m.

5 March East Dean Landscape and Legend Walk led by Richard Pailthorpe. Meet East Dean Village Hall at 10.00 a.m.

BE-A-BRICK !

Support Longport House

Buy one or more bricks for £1 each and you can win £25 !

When Longport House was dismantled every single brick and stone was numbered and recorded to ensure faithful re-erection. The total number is 7,618!

To help fund the project, the Museum launched the Be-a-Brick Campaign encouraging visitors to "buy" bricks for £1 each. Every month all the entries are put into a draw for cash prizes:

- 1st prize of £25
- 5 additional prizes of £10

To date, about one third of the £7,618 target has been raised.

Even if you are not able to visit the Museum, you can fill in the accompanying form and return it, with your cheque or postal order, to the Museum. For every month you enter, you have the chance to win a prize!

I want to support the Longport Be-a-Brick Campaign by buying the following number of bricks:

October December

November

Total at £1 per brick = £

Name:

Address:

.....

Please make cheques or postal orders payable to:

The Weald and Downland Open Air Museum

Thank you

Advertising Opportunities

The Museum is inviting advertisements for the March issue of the Magazine. Companies which have taken space in the last two issues have all been connected with the Museum as suppliers, sponsors or supporters.

If anyone is interested please contact Richard Pailthorpe at the Museum office.



**WEALD & DOWNLAND
OPEN AIR
MUSEUM**

SINGLETON, CHICHESTER, SUSSEX PO18 0EU
Telephone (0243) 811348 Facsimile (0243) 811475