

WEALD &
DOWNLAND

OPEN AIR
MUSEUM

MAGAZINE

Vol. 3 No. 11 October 1993



Richard Pailthorpe

The Museum's busiest special event, the Rare Breeds Show, underway in July.

GOOD ATTENDANCES HERALD BUOYANT YEAR FOR MUSEUM

The Museum has had a more buoyant season this year, with better weather, mild signs of recession lifting and strenuous marketing all contributing. By the beginning of September we had received 5,000 more visitors than the same time last year and it seems likely the year will end with a total of some 160,000 visitors.

During the summer there was a healthy increase in the number of families visiting, taking advantage of the special admission ticket on offer. The last few years have, however, seen a decrease in the number of individual adults, and this season shows the same pattern. School children and the over 60's remain in line with previous years' totals.

The season has been helped by more "normal" British weather, not too hot and not too cold or wet. August figures

were much improved as a result. Signs of a slight lift in the recessionary gloom of last year showed in the spending at the shop as well as in visitor numbers. Marketing and publicity have always been of primary importance in the Museum's administration, but efforts were redoubled at the beginning of this year, and have had an effect.

Budget cutbacks made at the beginning of the year to ensure survival if 1993 proved to be a further poor year helped the financial situation. Cuts were not easy to find since the Museum has always been a tightly run ship. Spending has been monitored carefully during the year and efforts by staff to keep costs to a minimum have been important and greatly appreciated.

Sponsorship and grant aid continues to be difficult to obtain in the current economic climate. Many grants are also

dependent on achieving matching funding from other sources, which is sometimes impossible to raise. Funding from Europe which is saving the day for some museums is impossible to obtain in this part of south east England.

For the first time the Museum will be open on Saturdays throughout the winter months, which will help take advantage of the growing number of visitors coming at off peak times. It will be interesting to see how many visitors come on this new open day, particularly as local hotels are keen to promote attractions in the area to guests staying on special weekend breaks.

The Museum will also be open daily between 26 December and 3 January following the success of last year's experiment when this post-Christmas and New Year holiday period drew 1,500 visitors.

Longport House Building Work Goes Ahead

Work on the re-erection of Longport House to form the museum's new entrance facility and shop started in September. Preparatory work will take place during the winter ready for the stone and brick work and the timber frame in the new year.

The structure will be rebuilt below the present office, almost exactly over the existing site of the car park lavatories. This site has been chosen because the contours suit the building well, and the entrance and exit to it are conveniently located in relation to Hambrook Barn. Visitors will emerge through the courtyard of Longport House and enter the barn by the rear doors.

The ladies lavatory will be temporarily re-located and divided for use by

ladies and gentlemen during the winter. The cattle shed housing the current gentlemen's lavatory will be moved to a new position opposite the stables by Gonville Cottage where it will be used for the storage of animal feed and to give shelter to livestock during the winter.

Roger Champion began work on the joinery and repair of the timbers of the crosswing in late summer. Site work began in September - water pipes have been located, new junction points installed and a new electricity cable laid. At the end of October two or three mature trees will be felled to make way for the building, at the same time letting in much needed light to trees in the vicinity planted more than 15 years

ago and now suffering from crowding.

A temporary sewer, electricity and water will be laid to one of the car park bays and the ladies lavatory craned to the site. The cattle shed will be strengthened ready for its move to its new site.

After the site has been cleared, foundations will be dug and underground services installed. Stone and brick work and assembly of the timber frame will follow.

During the winter work will proceed separately on the construction of the new lavatories adjoining Longport House, which although not part of the main project, must be given priority in advance of next season.

HIGH QUALITY SPECIAL EVENTS

The Museum's programme of special events was a success again this year - the weather was generally kind, and although attendances varied the quality of the events themselves has been higher than ever.

The **Traditional Food Fair** heralded the start of the events calendar. Sponsored by The Observer Series, this year's theme concentrated on cheese and dairy produce. Visitors particularly enjoyed demonstrations of cheese making by David Doble of Shere, Surrey.

Two events were held on the May bank holidays. Virginia Lyon organised a **Craft Fair** complemented by an exhibition from the Guild of Sussex Craftsmen. The **Wood and Wool** day was a new event which proved popular. Michelle Green helped organise an excellent display and demonstrations of spinning and weaving. We hope to build on the success of the event and encourage more woodland craft exhibitors.

The attendance at the **Heavy Horse Day** in June was lower than in recent years but there was an excellent turnout of horses and visitors were able to watch a wide range of activities. The skills test, sponsored by Chichester Tractors Ltd, was a major element of the day.

A new event took place at the end of June when the **History Re-enactment Workshop**, led by Andrew Robertshaw, reconstructed domestic life at the end of

Children engrossed in making bricks, led by Alfie Pilcher in the village square backyard during the Children's Activity Weekend.



Richard Pailthorpe



Diana Zeuner

Visitors watch as the late 16th century Pendean Farmhouse comes to life as members of the History Re-enactment Workshop display rural domestic activities of the time.

Museum staff are working on an extensive programme of events and activities to take place in 1994. The programme depends on continuing financial support and we are always pleased to hear from individuals or organisations who might like to help the Museum in this way.

the 16th century at Pendean Farmhouse. Dressed in appropriate reproduction period clothing members of the workshop took on specific roles demonstrating a wide range of activities within and around the house. These ranged from the entertainment of visitors to minute domestic details, such as the ingredients of a pie. Karova Farms' shepherd Roger Linley also participated and sheared sheep.

Well-researched re-enactment of history can be an excellent way to learn more about living in the past, and visitors found it a fascinating experience. A longer workshop is being planned for next summer.

The **Show for Rare and Traditional Breeds** was again a highlight of our year, proving popular with exhibitors and visitors, who were able to enjoy a record number of livestock entries, including the welcome return of pigs, after a two-year absence due to the threat of Blue Ear Disease. A tremendous amount of work goes into planning, organising and setting up the show site and thanks go to everybody involved. Particular mention must be made of show secretary Virginia Lyon, who works tirelessly throughout the year towards this event.

We especially appreciate the help given by our sponsors, who this year included a large number of individuals including Trustees, Friends and volunteers who

sponsored classes; the West Sussex Gazette, SCATS, National Westminster Bank of Chichester, Cyanamid, Stride and Son of Chichester, Colorama and Whitby's of Chichester, International Distillers and Vintners UK Ltd, makers of the Singleton malt whiskey and Wakeford Hotels of Worthing.



Diana Zeuner

Rare Breeds Show cattle champion, the White Park bull, Dynevor Rampant, owned by Crawley Borough Council's Tilgate Park Nature Centre and shown by Sue Osborne.

In August we held our second **Children's Activity Weekend**, and with the assistance of good weather this proved even more popular than last year's pioneer event. Volunteers and many of our regular craft demonstrators and some new ones led a wide range of activities and hands-on experiences for children and their families. Particularly popular this year was the traditional Sussex game of marbles.

PLUMBING AND MASONRY EXHIBITION MOVES FORWARD

Work progresses on the new exhibitions on stone masonry and plumbing inside Court Barn. Bob Powell and Richard Harris have been responsible for the exhibition text and design.

On the plumbing displays they have been ably assisted by Richard Murdoch, formerly with the Lead Sheet Association and now a freelance consultant. Together with other members of the Worshipful Company of Plumbers he has also been involved in preparing plumbers' tools and equipment in the reconstructed Plumbers' Workshop from Newick. This display opened at the beginning of the season. The stone and masonry displays have been supported by the Worshipful Company of Masons.

The exhibition will be opened formally at the beginning of next season, although visitors will have access to Court Barn throughout the winter.



Diana Zeuner

Richard Murdoch cleaning plumbing equipment in the Plumbers' Workshop ready for opening at the beginning of the season.

Two New Books Published

The Museum is joint publisher of a new book *A Time There Was* by Phoebe Somers, based on the many articles by the author for the West Sussex Gazette recording country life in the county during the first half of this century. The Museum's partner in the venture is Alan Sutton Publishing.

Among the interviews in the book is one with the Museum's spar maker, Albert Peacock. The text is illustrated with photographs from the period, including some from the George Garland Collection, reproduced courtesy of the West Sussex County Archivist.

An exhibition based on the book will take place in Crawley Hall from 14-31 October. Phoebe Somers will be signing copies of her book in Crawley Hall on Sunday 17 October between 2 p.m. and

3.30 p.m. The Museum is grateful to West Sussex County Council for its support of the book and the exhibition, and in particular to John Godfrey and Kim Leslie for their help and assistance.

The Museum is also publishing a new recipe book by food historian Maggie Black. The book contains recipes typical of the 15th to 17th centuries, which have been tried and tested and are all edible! Volunteers, particularly those on duty at Bayleaf, may find sampling the recipes helpful in gaining more knowledge of the type of food the house's occupants would have been familiar with. The book has been illustrated with wood engravings by Kate Dicker and we are grateful to the Worshipful Company of Cooks for their support.

A form to obtain the two books is enclosed with this Magazine.

Czech Musicians' Visit

The Museum hosted a visit from the Polajka Folklore Group of the Wallachian Open Air Museum at Roznov in the Czech Republic during the summer.

The group, about 25 strong, presented programmes of traditional music, song and dance at the Museum and in the centre of Chichester. With them were a jeweller, craftsmen in wood and stone and a bagpipe and flute maker. The group demonstrates folklore from the western Carpathian Mountain range, called the Beskydy Mountains in Moravia-Moravia.

Their informal spontaneous musical presentations which punctuated their visit enriched the experience of both visitors and staff and stewards of the Museum

who provided them with a barbecue and final meal on the last day of their stay.



Diana Zeuner

Members of the Polajka Folklore Group from Roznov in the Czech Republic performing at the museum in the summer.

Geoff Kent

It is with great sadness that we report the death of Geoff Kent, a dedicated member of the Museum staff for many years as well as a volunteer. Geoff had been beset by illness for several years but always strove to overcome discomfort and pain. He died at his home in Portsmouth on 7 September.

Geoff joined the staff as a bricklayer, his trade, and contributed to many building projects at the Museum, including Lurgashall Mill, Tichfield Market Hall and the Lavant Building. His wife, Dorothy, has also been a stalwart supporter of the Museum, putting in countless hours in the office undertaking a whole variety of tasks, from mounting slides and assembling press cuttings, to the annual visitor numbers analysis.

After his retirement Geoff continued to come to the Museum, undertaking any task he was asked to do, but particularly working with fellow volunteer Alf Bryden. It was only in the last few months that Geoff and Dorothy were unable to make the journey from Portsmouth.

We shall miss Geoff's cheery nature and sturdy determination, and offer our condolences to Dorothy and her family.

Staff changes

We are pleased to welcome Sue Wardle to the Museum staff. She joined us in July as Museum Secretary working with the Director's Secretary, Pat Melhuish, and has settled in very quickly at one of the Museum's most hectic times. Many thanks are due to volunteers Ann Allen and Jean Piggott for their invaluable help in the office over the last few months, and also to Gaye Maclaren, who assists in the office at busy times. We now have an extremely efficient team working on the Museum's administration.

Specialist skills courses

Specialist courses were again run at the Museum this year as part of the activities of the Joint Centre for Heritage Conservation and Management, in which the Museum is a partner.

A timber frame repair workshop was led by our Research Director, Richard Harris, a charcoal burning course (modern and ancient) by Alan Waters and a weekend course on chair bodging took place with Tim Wade.

Two seminars on fresh subjects were held. The Chalk Grassland Seminar on the management of the chalk downs was held in conjunction with West Sussex County Council and the Sussex Downs Conservation Board. A three-day workshop on Historic Leadwork was held with the Chichester College of Arts, Science and Technology and the Joint Centre.

FRIENDS TO HOLD ANNUAL CONFERENCE

The Friends' annual meeting is to have a new look from next year. A mini conference is being arranged, including an annual dinner, visits, talks and the annual meeting. Each element will be separately costed so that Friends and supporters can choose which parts they attend.

Full details will be included in the spring Magazine but the date will be 29/30 April. The probable programme will include a dinner with musical entertainment at the Vicar's Hall, Chichester, a

visit to the 17th century farm complex at Stag Park, Petworth led by Richard Harris with a picnic lunch, two talks on 17th century interiors and wall paintings, a tour of West Dean House and workshops, annual meeting and address by Dr Alan Hayes, Chairman of the Museum Trust.

If you live some way from the Museum the 1994 annual meeting could be a good excuse for a weekend break. A list of accommodation is available on request from the Museum office.

Friends' Secretary

Carol Hawkins has, sadly, notified us of her intention to retire as Friends' Honorary Secretary in November, a post she has filled so ably for the past 10 years.

Carol's involvement with the Museum has covered many activities. As well as her Friends' Committee work these have included fund raising, spring tour organisation, and part-time warden.

I should like to take this opportunity to thank her for all the hours she has put in. We shall of course continue to see her regularly at the Museum.

We are very lucky to have found someone who is willing to step into Carol's shoes, Mrs Jean Piggott. Jean has recently helped regularly in the office assisting the over-worked secretaries and is ideally suited to become the next Friends' Honorary Secretary.

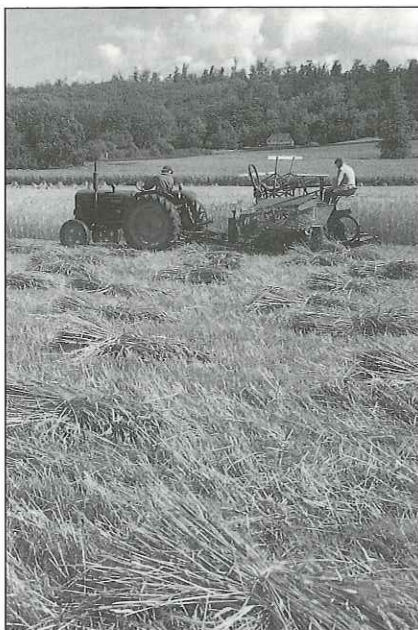
Virginia Lyon

FRIENDS SPRING TOUR

The Friends' 1994 tour from 21-24 April will be based at Plymouth at the Moat House International Hotel overlooking the Hoe and the sea, with visits likely to include Morwellham Quay; the National Shire Horse Centre; Saltram House; Buckland Abbey; Overbeck Gardens, Salcombe; Compton Castle; Bowhill, a 15th century mansion at Exeter; Cotehele and Dartmouth, with a possible river trip.

The cost will be £155 to include return coach from Singleton, bed and breakfast and evening meal and admission charges. There is a single room supplement of £15 per night, but these are limited.

To apply please complete the form enclosed with the magazine. If you have any queries please ring Frank Knights, tour organiser, at home on 0243 375751 or at the Museum on Tuesdays and Fridays until the end of October.



Diana Zeuner

The Museum's thatching straw crop being cut in August by Dave Gabbitas using his restored Fordson tractor, with Albert Peacock seated on the binder. Three ricks await threshing on 23/24 October.

1994 Friends Subscriptions

At the Annual General Meeting in April the members approved new subscription rates to come into effect on 1 January 1994. The subscription rates were last increased in 1990 and had become out of line with present day costs.

The new rates are: Individual member £12 pa.; Individual member (pensioner) £9 pa.; Family £24 pa.

For most members who pay by standing order this will mean a fresh instruction has to be given to their bank. The Treasurer will be writing to all members affected before their 1994 subscriptions become due.

The Friends Committee has been trying to arrange direct debit facilities for members, to avoid the complications which arise whenever there is a change in subscription rates, but unfortunately the legal arrangements to support this will not be in place in time for the 1994 subscriptions.

CHRISTOPHER FRY SPEAKS AT SLINDON LUNCHEON

Friday 19 November

The Friends' next fund-raising event will be a luncheon at Slindon Coronation Hall on Friday, 19 November at 12.30 for 1 p.m., when Christopher Fry, a generous supporter of the Museum, has agreed to speak.

Copies of the poem which he wrote about the Museum, illustrated by Slindon Friend Faith Harris, will be on sale. Tickets will be limited to 50 and applications dealt with in order of opening.

Friends future social events

Friends winter social and fund-raising events begin in November with a special presentation of photographs and news cuttings from the early days of the Museum.

Virginia Lyon is mounting a display of her own material in Crawley Hall on three days, 27 November, 9 January and 27 February, with coffee and biscuits, tea and cakes available at a small charge. Videos of short television programmes which have featured the Museum will also be available, it is hoped, and slides will be shown too. The exhibition is completely informal and visitors can stay for as long as they wish. Friends and supporters with their own photographs or slides may bring them too (at their own risk).

In 1994 it is hoped to arrange coach trips to Chatham Historic Dockyard, Ightham Mote and Luton Museum and hat factory. At Chatham (the Museum supplied the roof battens for the rope walk restoration) visitors can watch demonstrations of rope making, visit the "Wooden Walls" exhibition telling the story of the life of an 18th century ship's carpenter, and see other crafts associated with a naval dockyard. At Ightham Mote we would have a conducted tour of the restoration so far completed and at Luton it is hoped to arrange a meeting with some Friends of Luton Museums and learn more about the straw plait and straw hat industry.

Please indicate on the enclosed form if you are interested in any of these outings.

Attention preserve makers!

We shall be running a preserves competition once again at the Traditional Food Fair at Easter, and welcome entries of jams, chutneys etc. An entry form will be enclosed with the March Magazine.

VOLUNTEERS HELP WITH THE COLLECTIONS

Volunteers have been helping Curator Bob Powell tackle the management and care of the collections during the season.

Nigel Westacott from Singleton and Octavia Heywood Kenny, a post graduate student on work experience for her Museums Diploma, have assisted with the cataloguing backlog. Conservation and restoration work was undertaken by Peter Stock, Phil Willis, Geoff Busbridge and Brenda Cockburn. Muscle power was provided for the re-organisation of large items at Charlton by John Herniman and his crew.

The Museum has received its first barn threshold, donated by John Hosking of East Harting Farm from a barn constructed circa 1840.

Another valued donation was a series of building books from Mr Pitt of Rowlands Castle. The books are particularly good on detailed materials and practices relating to the 19th century and earlier. We also received a bequest from the late Peter Burton including many titles on vernacular architecture not previously

available at the Museum.

Attics have provided another source of donations. Bernard Johnson discovered a cleft and woven oak spale basket of a type recently demonstrated at the Museum by Owen Jones.

Wendy Shallow of Eartham donated a 26in working horse collar in good condition, made possibly in the 1940's or 1950's.

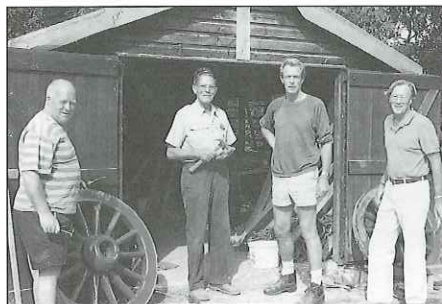
We prefer not to take on loans for various legal reasons, but we have recently taken on permanent loan from Worthing Museum a large 14ft long Sussex waggon probably built in the 1880's but repaired by its last owner, Peter Powell of Coolham in 1942. It was in need of a new home due to the development of the Worthing Museum store site. It is complete, mobile and a fine example of its type still in its original colours. We hope it will be seen by visitors at special events, when we can demonstrate the importance of retaining some museum items un-restored by comparing it to our own working example.

SLEEVES UP!

John Herniman has led the practical volunteers group to good effect this year, continuing through the summer with practical "sleeves-up" tasks undertaken during the winter months by the "Tuesday Gang"

The group began in March with eight volunteers, and currently stands at 10. A collection of tools and equipment has been built up and a good working relationship established with the Museum's permanent staff, whose help is much appreciated.

Among tasks achieved were: re-decorating the Toll Cottage, thinning and re-planting the snowdrop clumps, cleaning and weeding outside the houses, refurbishment of the Woodland display panels, cleaning of harness at the stables, assisting with re-organising storage facilities at Charlton Barns, sawing wood for charcoal burning, redecorating the Shepherd's Hut and preparation of horse-



Members of the group working on repainting waggon wheels and cleaning horseshoes. Left to right, Brian Dell, Reg Knight, John Herniman and Nick Hutton.

shoes for sale in the shop, (800 were cleaned between 22 July and 31 August!)

If such an assortment of work appeals to you, more volunteers are always welcome. If you are interested in joining the group please contact John Herniman on 0243 527374.

Livestock Developments

The Museum's livestock saw several developments this year. The Sussex cow produced a heifer and Rosie, the Shire mare, produced a filly foal, Molly. A Tamworth boar on loan from the Rare Breeds Survival Trust is visiting our sows.

A small flock of hens has taken up residence in their new quarters in the barn outshot, prior to the pure-bred flock of Dorkings arriving shortly.

The Southdown ram, whose progeny proved a great attraction in the early part of the season, cannot be used again on our ewes and has been sold. A replacement ram has arrived.

Straw Plaiting

Virginia Lyon has introduced straw plaiting as a new demonstration at the Museum following a meeting with Veronica Main, chairman of the Friends of Luton Museum. The boys who attended West Wittering School, rebuilt at the Museum, were taught to make straw hats.

Several volunteer stewards have been taught by Veronica Main how to make the three simplest forms of straw plait, and were able to demonstrate the craft on various days at the Museum. If anyone else would like to learn please contact Virginia Lyon on Tel: 0243 814382.

MUSEUM DIRECTOR IN RUSSIA

The Museum Director, Chris Zeuner is in his final year as President of the European Association of Open Air Museums. This has taken him to northern Russia and Romania this year. In Russia, joining with a colleague from Sweden, he attended a conference celebrating the 25th anniversary of a large open air museum at Archangel.

It concentrated on the increasing demands on Russian museums to earn revenue from their activities and explored how they might cope with the changing economic circumstances. One of the most difficult new projects is on the Slovetzky Islands in the White Sea.

These include a large and beautiful monastery which became one of the most notorious prison camps. New conflicts have arisen between the museum management and the Church, which wants to take over the site.

Visit to Normandy

Richard Pailthorpe accompanied nearly 30 members of the Friends on a short tour to Normandy in May. The tour guides, Marjorie Hallam and Kay Coutin, had spent many years researching historic buildings of the region and with the benefit of their knowledge they spent a fascinating few days visiting a number of very interesting towns, villages, buildings and historic sites.

These included the magnificent timber framed church at Honfleur, the chateaux at Courcy and Crevecoeur with its small open air museum, and the manoirs of de Querville, de Champ Versant and de Canapville.

John Herniman takes to the Hills!

Probably the most remarkable fund-raising event this summer was a one man effort by Friends committee member and Volunteer Co-ordinator John Herniman, who raised £468 for the Museum by running 83 miles in 20 hours along the South Downs Way.

After months of training he set off confidently, boosted by a welcome from a party of friends at Cocking. Virginia Lyon, Carol Hawkins and others were there to cheer him on.

Friends Produce Stall

Joan Brooks has again offered to organise the Friends produce stall at the Steam Threshing and Horse Ploughing Weekend on Sunday 24 October. All contributions will be gratefully received (Tel: 0243 527332).

REIGATE CHIMNEY COMPLETED

The chimney to the 17th century house from Reigate has been completed, giving a dramatic perspective to the village backyard. The first two-thirds of the chimney are of stone, dressed and built by Mick Betsworth, and the brick section was completed by Mick assisted by his brother, Ron.

The next stage of the project is to install the oriel window and complete the interior, including the installation of the conserved paintings and the proposed exhibition dealing with paint.

We are currently discussing the possibility of including a small exhibition on glass and leaded lights, for which we have been offered support by the Worshipful Company of Glaziers. In the winter Bob Powell will be installing the painters' workshop into the basement.



Diana Zeuner

The imposing view of Reigate's reconstructed chimney from below the Joiners' Workshop.

CHRISTMAS SHOPPING WEEKEND

Keith Bickmore is stocking the Museum Shop for a special shopping weekend on 27/28 November, giving Friends and supporters an excellent chance to buy a wide variety of presents for Christmas.

Don't forget, the Museum is open daily for the Christmas period, from 26 December to 3 January; and Christmas Carols will again be held in North Cray House on Monday, 20 December at 7 p.m.

ADVERTISING OPPORTUNITIES

The Museum is inviting advertisements for the March issue of the Magazine. Companies which have taken space in the last two issues have all been connected with the Museum as suppliers, sponsors or supporters. We hope readers will make use of the services they provide. Advertising helps to offset the costs of producing and mailing the Magazine.

If anyone is interested in taking an advertisement in the March issue please contact Richard Pailthorpe at the Museum office.

WINTER TALKS

A varied programme of winter talks has been organised by the Museum; each talk begins at 7 p.m. and is held at Crawley Hall.

Thursday November 11 *Society and Landscape in The Adur Valley* by Dr Peter Brandon, author of several books and publications on Sussex. Dr Brandon is much involved with the Sussex Downs Conservation Board and the Council for the Protection of Rural England

Tuesday January 11 1994 *Early Buildings* by Dr Peter Reynolds, Director of the Butser Iron Age Farm. Dr Reynolds will look at archaeological evidence of building types and styles prior to medieval times.

Tuesday January 18 *Journey Through Rural Romania* by Christopher Zeuner, Director, Weald and Downland Open Air Museum. Mr Zeuner will explore open air museums and village life from Bucharest to the mountains of

Maramures.

Thursday January 27 *Poverty and the Poor Law in West Sussex* - an illustrated history by Kim Leslie, Trustee of the Weald and Downland Open Air Museum

Tuesday February 8 *Traditional Sheep Milking in Europe* by Olivia Mills, who has travelled extensively through remote parts of Europe to regions where sheep are still kept for their dairy products.

Thursday February 17 *Settlement in the Upper Lavant Valley* by Marjorie Hallam, Vice President of the Weald and Downland Open Air Museum

Thursday February 24 *Medieval Life in Replica - Sources for the Bayleaf Project* by Richard Harris, Research Director, Weald and Downland Open Air Museum. Mr Harris will describe the sources of information for items used in the replica furnishing of Bayleaf Farmhouse.

EVENTS DIARY

October 7 ESUS Woodland Management course *A Future from the Past for Low-grade Timber*, for professionals, at Crawley Hall

October 23/24 Steam Threshing and Ploughing with Heavy Horses - the Museum's main Autumn special event
October 14-31 *A Time There Was* - an exhibition of portraits, photographs and artefacts from the first half of the 20th century to celebrate the launch of the book by Phoebe Somers

November 19 Slindon Fund-raising Luncheon - speaker: Christopher Fry

November 24 Goodwood Country Park Walk led by Ranger, Gary Couper. Meet at Counters Gate car park at 10 a.m.

November 27 Friends event - photographs, news cuttings, slides and videos of the Museum, with refreshments, in Crawley Hall (repeated in January and February)

November 27/28 Christmas Shopping Weekend at the Museum

December 20 Carols at North Cray House: 7 p.m.

December 26 Trundle Landscape Walk led by Goodwood Country Park Ranger, Gary Couper. Meet at Seven Points car park at 1.30 p.m.

December 26 - January 3 Christmas and New Year Opening at the Museum

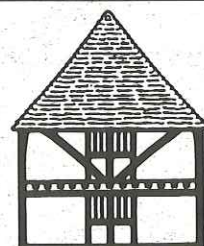
January 9 Friends event - photographs, news cuttings, slides and videos of the Museum, with refreshments, in Crawley Hall

February 27 Friends event - photographs, news cuttings, slides and videos of the Museum, with refreshments, in Crawley Hall

County Council Events

The Museum hosted two important West Sussex County Council occasions this year, both at Crawley Hall. The first was the launch of the County Council's Rural Strategy, a planning document outlining the County's strategy towards the countryside and rural communities.

The second was the County Council's Environment Week, a project organised by the Education Department and targeted at schools.



**WEALD &
DOWNLAND
OPEN AIR
MUSEUM**

SINGLETON, CHICHESTER, SUSSEX PO18 0EU
Telephone (0243) 811348 Facsimile (0243) 811475