

Entries are invited for the Hand Spun and Fleece Classes at this years show to be held at the Weald & Downland Open Air Museum, Singleton on the 19 July 2009

Prizes awarded include Rosettes for the first six placings in each class, £5.00 for the Champion Fleece and 1st £5 , 2nd £3, & 3rd £2 in the Hand Spun Classes.

ALL EXHIBITORS REGISTERED PRIOR TO THE SHOW GET AN ENTRY PASS TO THE SHOW AND MUSEUM FOR ONE CAR AND OCCUPANTS. (Entries received by Thursday prior to Show).

Latest date for an entry to be printed in the Show Programme is 3 July 2009. Late entries will be accepted up to and including the Show date but not later than 10 a.m. at the Fleece/ Hand Spun Marquee.

Entry Fee : £1.50 per entry for Hand Spun or Fleece classes.

HAND SPUN

Judge: Veronica Greenham

All entries to be made from handspun yarn using fleece from a Breed eligible for the Show (see back page) either alone or combined with other fibres, such as silk, mohair or fleece from another breed. These may be plied, blended, or combined with other handspun yarn, but the whole to consist of not less than 50% Rare, Minority or Traditional Breed Wool.

- Class 127 An adult's or child's sweater, cardigan, jacket or slip over hand knitted
- Class 128 An adult's or child's sweater, cardigan. jacket or slipover made by any other means than hand knit.
- Class 129 A shawl, stole or scarf
- Class 130 Any other item, e.g. hats, placemats, gloves, etc.
- Class 131 Any rug or wall hanging
- Class 132 Any item made by someone who learnt to spin in 2008

Highly Commended Rosettes may be awarded at the Judges discretion.

SKEIN OF YARN

Item must be handspun by the exhibitor within the past year. Maximum of 50g or 2 oz, neatly wound.

- Class 133 All wool skein -100% sheep's wool, natural white, or coloured, or dyed.
- Class 134 Blended Skein – At least 50% sheep's wool, designed to show the versatility of wool when combined with other fibres in a smooth, evenly spun standard plied yarn.
- Class 135 Fancy Yarn Skein

- Class 136 Novice and Youth Skein – Novice Spinning for 1 year or less. 100% Sheep's wool.

FELT

- Class 137 A Needle Felted Item
- Class 138 Any other item made from felt, not needle felt

FLEECE

Judge: Mr N.J. Crockford

- Class 117 1 Jacob fleece**
Class 118 3 Jacob fleece
Class 119 1 Longwool fleece
Class 120 3 Longwool fleece
Class 121 1 Shortwool fleece
Class 122 3 Shortwool fleece
Class 123 1 Shetland fleece
Class 124 3 Shetland fleece
Class 125 1 Coloured fleece
Class 126 3 Coloured fleece

Fleeces must be from pure breeds eligible in the Sheep classes.

No Shetland or Jacob Fleeces to be entered in Classes 125 & 126

A fleece cannot be entered in more than one class

The entry number label is to be attached with a staple of fleece or "butchers" string. The Coloured Sheep Breeders Association will award Champion Rosettes for the two highest placed coloured fleeces.

HAND SPUN / FLEECE ENTRY FORM

Name.....

Address.....

.....

.....

Postcode.....

Telephone Number.....

Please enter me in following classes

Class Number.....Fee.....

Class Number.....Fee.....

Class Number.....Fee.....

Class Number.....Fee.....

Class Number.....Fee.....

Class Number.....Fee.....

Please detach this form and send with entry fee
(Cheque payable to the Weald & Downland
Museum) to:

The Show Secretary, Singleton Show for Rare &
Tradition Breeds, Weald & Downland Open
Air Museum, Singleton, Chichester, West
Sussex, PO18 0EU.

ELIGIBLE BREEDS

Primitives: Boreray, Castlemilk Moorit,
Hebridean^T, North Ronaldsay,
Soay, Manx Loghtan, Shetland^c.

Down: Dorset Down, Dorset Horn,
Lleyn^c, Norfolk Horn^c, Oxford
Down^T, Ryeland*, Coloured
Ryeland^T, Shropshire, Southdown,
Wiltshire Horn^T.

Longwool: Cotswold, Greyface Dartmoor,
Leicester & Black Leicester
Longwool, Teeswater,
Wensleydale. Devon & Cornwall

Heath or Hill: Balwen, Black Welsh
Mountain^c, Herdwick^c, Hill
Radnor, Kerry Hill^T,
Llanwenog, Portland, Torddu^c,
Torwen^c, White Face
Dartmoor. Whitefaced Woodland.

Jacob^c

All breeds are classified by the RBST as rare
except where marked ^T Traditional, ^N Native
stock of pure British descent at risk, or ^C
Conventional to this show.

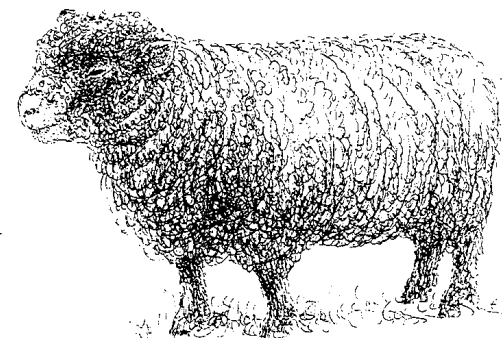
Guest Breed - Gotland

THE WEALD & DOWNLAND OPEN AIR MUSEUM
SINGLETON, CHICHESTER, WEST SUSSEX PO18 0EU
Telephone 01243 811363
Fax :01243 811475
email: singletonshow@aol.com

SINGLETON SHOW FOR RARE & TRADITIONAL BREEDS

SUNDAY 19 JULY 2009

HANDSPUN AND FLEECE EXHIBITS



**WEALD & DOWNLAND
OPEN AIR MUSEUM**

SINGLETON, CHICHESTER, WEST SUSSEX PO18 0EU, TEL. (01243)811363