

**Entries are invited** for the Hand Spun and Fleece Classes at this years show to be held at the Weald & Downland Open Air Museum, Singleton on the 18 July 2010

Prizes awarded include Rosettes for the first six placings in each class, £5.00 for the Champion Fleece and 1<sup>st</sup> £5 , 2<sup>nd</sup> £3, & 3<sup>rd</sup> £2 in the Hand Spun Classes.

**ALL EXHIBITORS REGISTERED PRIOR TO THE SHOW GET AN ENTRY PASS TO THE SHOW AND MUSEUM FOR ONE CAR AND OCCUPANTS. (Entries received by Thursday prior to Show).**

Latest date for an entry to be printed in the Show Programme is 30 June 2010. Late entries will be accepted up to and including the Show date but not later than 10 a.m. at the Fleece/ Hand Spun Marquee.

**Entry Fee :** £1.50 per entry for Hand Spun or Fleece classes.

## HAND SPUN

Judge: Mrs Maureen Raven-Smith

All entries to be made from handspun yarn using fleece from a Breed eligible for the Show (see back page) either alone or combined with other fibres, such as silk, mohair or fleece from another breed. These may be plied, blended, or combined with other handspun yarn, but the whole to consist of not less than 50% Rare, Minority or Traditional Breed Wool.

- Class 127 An adult's or child's sweater, cardigan, jacket or slip over hand knitted
- Class 128 A shawl, stole or scarf
- Class 129 Any other item, e.g. hats, placemats, gloves, etc.
- Class 130 Any rug or wall hanging
- Class 131 Any item made by someone who learnt to spin in 2009

Highly Commended Rosettes may be awarded at the Judges discretion.

## SKEIN OF YARN

Item must be handspun by the exhibitor within the past year. Maximum of 50g or 2 oz, neatly wound.

- Class 132 All wool skein -100% sheep's wool, natural white..
- Class 133 All wool skein -100% sheep's wool, natural coloured.
- Class 134 Blended Skein – At least 50% sheep's wool, designed to show the versatility of wool when combined with other fibres in a smooth, evenly spun standard plied yarn.
- Class 135 Fancy Yarn Skein
- Class 136 Novice and Youth Skein – Novice Spinning for 1 year or less. 100% Sheep's wool.

## FELT

- Class 137 A needle felted item
- Class 138 Any other item made from felt, not needle felt

## FLEECE

Judge: Mr N.J. Crockford

- Class 117 1 Jacob fleece
- Class 118 3 Jacob fleece
- Class 119 1 Longwool fleece
- Class 120 3 Longwool fleece
- Class 121 1 Shortwool fleece
- Class 122 3 Shortwool fleece
- Class 123 1 Shetland fleece
- Class 124 3 Shetland fleece
- Class 125 1 Coloured fleece
- Class 126 3 Coloured fleece

Fleeces must be from pure breeds eligible in the Sheep classes.

No Shetland or Jacob Fleeces to be entered in Classes 125 & 126

A fleece cannot be entered in more than one class

The entry number label is to be attached with a staple of fleece or "butchers" string. The Coloured Sheep Breeders Association will award Champion Rosettes for the two highest placed coloured fleeces.

## HAND SPUN / FLEECE ENTRY FORM

Name.....

Address.....

.....

.....

Postcode.....

Telephone Number.....

Please enter me in following classes

Class Number.....Fee.....

Class Number.....Fee.....

Class Number.....Fee.....

Class Number.....Fee.....

Class Number.....Fee.....

Class Number.....Fee.....

Please detach this form and send with entry fee  
(Cheque payable to the Weald & Downland  
Museum) to:

The Show Secretary, Singleton Show for Rare &  
Tradition Breeds, Weald & Downland Open  
Air Museum, Singleton, Chichester, West  
Sussex, PO18 0EU.

## ELIGIBLE BREEDS

**Primitives:** Boreray, Castlemilk Moorit,  
Hebridean<sup>T</sup>, North Ronaldsay,  
Soay, Manx Loghtan, Shetland<sup>c</sup>.

**Down:** Dorset Down, Dorset Horn,  
Lleyn<sup>c</sup>, Norfolk Horn<sup>c</sup>, Oxford  
Down<sup>T</sup>, Ryeland\*, Coloured  
Ryeland<sup>T</sup>, Shropshire, Southdown,  
Wiltshire Horn<sup>T</sup>.

**Longwool:** Cotswold, Greyface Dartmoor,  
Leicester & Black Leicester  
Longwool, Teeswater,  
Wensleydale. Devon & Cornwall

**Heath or Hill:** Balwen, Black Welsh  
Mountain<sup>c</sup>, Herdwick<sup>c</sup>, Hill  
Radnor, Kerry Hill<sup>T</sup>,  
Llanwenog, Portland, Torddu <sup>c</sup>,  
Torwen <sup>c</sup>, White Face  
Dartmoor. Whitefaced Woodland.

### Jacob <sup>c</sup>

All breeds are classified by the RBST as rare  
except where marked <sup>T</sup> Traditional, <sup>N</sup> Native  
stock of pure British descent at risk, or <sup>C</sup>  
Conventional to this show.

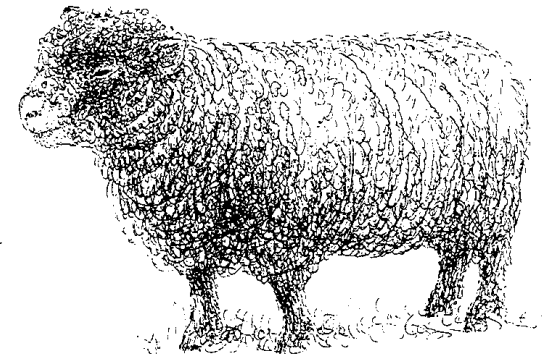
### Guest Breed - Gotland

THE WEALD & DOWNLAND OPEN AIR MUSEUM  
SINGLETON, CHICHESTER, WEST SUSSEX PO18 0EU  
Telephone 01243 811363  
Fax: 01243 811475  
email: singletonshow@aol.com

## SINGLETON SHOW FOR RARE & TRADITIONAL BREEDS 25<sup>th</sup> Anniversary

### SUNDAY 18 JULY 2010

## HANDSPUN AND FLEECE EXHIBITS



**WEALD & DOWNLAND  
OPEN AIR MUSEUM**

SINGLETON, CHICHESTER, WEST SUSSEX PO18 0EU, TEL (01243)811363